

**GATE-2008 Aerospace Engineering (AE)**

**Q. 1 – Q. 20 carry one mark each.**

1. The function defined by

$$\begin{aligned} f(x) &= \sin x, & x < 0 \\ &= 0, & x = 0 \\ &= 3x^2, & x > 0 \end{aligned}$$

- (A) is neither continuous nor differentiable at  $x = 0$   
(B) is continuous and differentiable at  $x = 0$   
(C) is differentiable but not continuous at  $x = 0$   
(D) is continuous but not differentiable at  $x = 0$

2. The product of eigenvalues of the matrix

$$\begin{bmatrix} 1 & 0 & 1 \\ 0 & 2 & 1 \\ 1 & 1 & -3 \end{bmatrix} \text{ is}$$

- (A) 4  
(B) 0  
(C) -6  
(D) -9

3. Which of the following equations is a LINEAR ordinary differential equation?

- (A)  $\frac{d^2y}{dx^2} + \frac{dy}{dx} + 2y^2 = 0$   
(B)  $\frac{d^2y}{dx^2} + y\frac{dy}{dx} + 2y = 0$   
(C)  $\frac{d^2y}{dx^2} + x\frac{dy}{dx} + 2y = 0$   
(D)  $\left(\frac{dy}{dx}\right)^2 + \frac{dy}{dx} + 2y = 0$

4. To transfer a satellite from an elliptical orbit to a circular orbit having radius equal to the apogee distance of the elliptical orbit, the speed of the satellite should be

- (A) increased at the apogee  
(B) decreased at the apogee  
(C) Increased at the perigee  
(D) decreased at the perigee

5. The service ceiling of a transport aircraft is defined as the altitude

- (A) that is halfway between sea-level and absolute ceiling  
(B) at which it can cruise with one engine operational  
(C) at which its maximum rate of climb is zero  
(D) at which its maximum rate of climb is 0.508 m/s

6. The drag of an aircraft in steady climbing flight at a given forward speed is

- (A) inversely proportional to climb angle  
(B) higher than drag in steady level flight at the same forward speed  
(C) lower than drag in steady level flight at the same forward speed  
(D) independent of climb angle
7. In steady, level turning flight of an aircraft at a load factor ' $n$ ', the ratio of the horizontal component of lift and aircraft weight is  
(A)  $\sqrt{n - 1}$   
(B)  $\sqrt{n + 1}$   
(C)  $\sqrt{n^2 - 1}$   
(D)  $\sqrt{n^2 + 1}$
8. The parameters that remain constant in a cruise-climb of an aircraft  
(A) Equivalent air speed and lift coefficient  
(B) Altitude and lift coefficient  
(C) Equivalent air speed and altitude  
(D) lift coefficient and aircraft mass
9. The maximum thickness to the chord ratio for the NACA 24012 airfoil is  
(A) 0.01  
(B) 0.12  
(C) 0.24  
(D) 0.40
10. The maximum possible value of pressure coefficient  $C_p$  in compressible flow is  
(A) 0.5  
(B) 1  
(C)  $\pi$   
(D)  $\infty$
11. An irrotational and inviscid flow can become rotational on passing through a  
(A) Normal shock wave  
(B) oblique shock wave  
(C) Curved shock wave  
(D) Mach wave
12. Laminar flow airfoils are used to reduce  
(A) trim drag  
(B) skin friction drag  
(C) induced drag  
(D) wave drag
13. The degree of reaction of an impulse turbine  
(A) 1

- (B) 0.75  
(C) 0.5  
(D) 0
14. In a convergent-divergent (CD) nozzle of a rocket motor, the wall heat flux is maximum at  
(A) The exit of the divergent portion of the CD nozzle  
(B) The entry of the convergent portion of the CD nozzle  
(C) The throat of the CD nozzle  
(D) The mid-length of the divergent portion of the CD nozzle
15. In a scramjet engine, the Mach number at the entry to the combustion chamber is around  
(A) 0  
(B) 0.3  
(C) 2  
(D) 6
16. DB denotes double base solid propellant.  
LOX-RP1 denotes liquid oxygen – kerosene combination  
LOX-LH<sub>2</sub> denotes liquid oxygen – hydrogen combination  
The correct order of increasing specific impulse is  
(A) DB < LOX-RP1 < LOX-LH<sub>2</sub>  
(B) LOX-RP1 < DB < LOX-LH<sub>2</sub>  
(C) LOX-LH<sub>2</sub> < DB < LOX-RP1  
(D) DB < LOX-LH<sub>2</sub> < LOX-RP1
17. In absence of body moments, the symmetry of the stress tensor is derived from  
(A) force equilibrium conditions  
(B) moment equilibrium conditions  
(C) linear relations between stresses and strains  
(D) compatibility conditions
18. In a 3-D orthotropic material, the number of elastic constants in linear stress-strain relationship is  
(A) 3  
(B) 5  
(C) 9  
(D) 21
19. The compatibility conditions in theory of elasticity ensure that  
(A) There is compatibility between direct and shear stresses  
(B) Relationships between stresses and strains are consistent with constitutive relations  
(C) Displacements are single-valued continuous  
(D) Stresses satisfy bi-harmonic equation

GATE Aerospace Academy

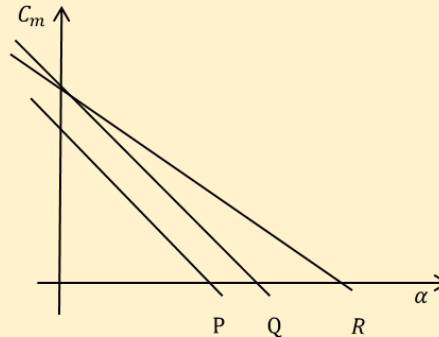
20. In a spring-mass-damper single degree of freedom system, the mass is 2 kg and the undamped natural frequency is 20 Hz. The critical damping constant of the system is
- (A)  $160\pi$  N.s/m
  - (B)  $80\pi$  N.s/m
  - (C) 1 N.s/m
  - (D) 0 N.s/m

**Q. 21 – Q. 75 carry two marks each.**

21. Which of the following quantities remains constant for a satellite in an elliptical orbit around the earth?
- (A) Kinetic energy
  - (B) Product of speed and radial distance from the center of the earth
  - (C) Rate of area swept by the radial vector from the center of the orbit
  - (D) Rate of area swept by the radial vector from the center of the earth
22. A planet is observed to be at its slowest when it is at a distance  $r_1$  from the sun and at its fastest when it is at a distance  $r_2$  from the sun. the eccentricity  $e$  of the planet's orbit is given by
- (A)  $e = \frac{r_1}{r_2}$
  - (B)  $e = \frac{r_1 - r_2}{r_1 + r_2}$
  - (C)  $e = \frac{r_2}{r_1}$
  - (D)  $e = \frac{r_1 + r_2}{r_1 - r_2}$
23. The function  $f(x, y, z) = \frac{1}{2} x^2 y^2 z^2$  satisfies
- (A)  $\text{grad } f = 0$
  - (B)  $\text{div}(\text{grad } f) = 0$
  - (C)  $\text{curl}(\text{grad } f) = 0$
  - (D)  $\text{grad}(\text{div}(\text{grad } f)) = 0$
- GATE Aerospace Academy
24. Which of the following is true for all choices of vectors  $\vec{p}, \vec{q}, \vec{r}$ ?
- (A)  $\vec{p} \times \vec{q} + \vec{q} \times \vec{r} + \vec{r} \times \vec{p} = 0$
  - (B)  $(\vec{p} \cdot \vec{q})\vec{r} + (\vec{q} \cdot \vec{r})\vec{p} + (\vec{r} \cdot \vec{p})\vec{q} = 0$
  - (C)  $\vec{p} \cdot (\vec{q} \times \vec{r}) + \vec{q} \cdot (\vec{r} \times \vec{p}) + \vec{r} \cdot (\vec{p} \times \vec{q}) = 0$
  - (D)  $\vec{p} \times (\vec{q} \times \vec{r}) + \vec{q} \times (\vec{r} \times \vec{p}) + \vec{r} \times (\vec{p} \times \vec{q}) = 0$
25. The value of the line integral  $\frac{1}{2\pi} \oint (x dy - y dx)$  taken anticlockwise along the circle of unit radius is
- (A) 0.5
  - (B) 1
  - (C) 2
  - (D)  $\pi$

26. Which of the following is a solution of  $\frac{d^2y}{dx^2} + 2\frac{dy}{dx} + y = 0$ ?
- (A)  $e^{-x} + xe^{-x}$   
(B)  $e^x + xe^{-x}$   
(C)  $e^x + e^{-x}$   
(D)  $e^{-x} + xe^x$
27. Suppose the non-constant functions  $F(x)$  and  $G(t)$  satisfy  $\frac{d^2F}{dx^2} + p^2F = 0$ ,  $\frac{dG}{dt} + c^2p^2G = 0$ , where  $p$  and  $c$  are constants. Then the function  $u(x, t) = F(x) G(t)$  definitely satisfies.
- (A)  $\frac{\partial^2u}{\partial t^2} = c^2 \frac{\partial^2u}{\partial x^2}$   
(B)  $\frac{\partial u}{\partial t} = c^2 \frac{\partial^2u}{\partial x^2}$   
(C)  $\nabla^2u = 0$   
(D)  $\frac{\partial^2u}{\partial t^2} + c^2u^2 = 0$
28. The following set of equations 
$$\begin{bmatrix} 1 & 1 & 2 \\ 1 & 0 & 1 \\ 0 & 1 & 1 \end{bmatrix} \begin{bmatrix} x_1 \\ x_2 \\ x_3 \end{bmatrix} = \begin{bmatrix} 1 \\ -1 \\ 0 \end{bmatrix}$$
 has
- (A) No solution  
(B) a unique solution  
(C) two solutions  
(D) infinite solutions
29. The function  $f(x) = x^2 - 5x + 6$
- (A) Has its maximum value at  $x = 2.0$   
(B) Has its maximum value at  $x = 2.5$   
(C) Is increasing in the interval  $(2.0, 2.5)$   
(D) Is increasing in the interval  $(2.5, 3.0)$
30. Let  $Y(s)$  denote the Laplace transform  $L(y(t))$  of the function  $y(t) = \cosh(at) \sin(at)$ . Then
- (A)  $L\left(\frac{dy}{dt}\right) = \frac{dY}{ds}$ ,  $L(t y(t)) = sY(s)$   
(B)  $L\left(\frac{dy}{dt}\right) = sY(s)$ ,  $L(t y(t)) = -\frac{dY}{ds}$   
(C)  $L\left(\frac{dy}{dt}\right) = \frac{dY}{ds}$ ,  $L(t y(t)) = Y(s - 1)$   
(D)  $L\left(\frac{dy}{dt}\right) = sY(s)$ ,  $L(t y(t)) = e^{as}Y(s)$
31. The velocity required for a spacecraft to escape earth's gravitational field depends on
- (A) The mass of the spacecraft  
(B) The distance between earth's center and the spacecraft  
(C) The earth's rotational speed about its own axis  
(D) The earth's orbital speed

32. The figure below shows the variation of  $C_m$  versus  $\alpha$  for an aircraft for three combinations of elevator deflections and locations of centre of gravity. In the figure, lines P and Q are parallel, while lines Q and R have the same intercept on the  $C_m$  axis.



Which of the following statements are true?

- (A) Lines P and Q correspond to the same centre of gravity location.  
 (B) Lines Q and R correspond to the same centre of gravity location.  
 (C) Lines P and Q correspond to the same elevator deflection.  
 (D) Lines P and R correspond to the same centre of gravity location.
33. Which of the following statements is TRUE as the altitude increases in stratosphere of International Standard Atmosphere?  
 (A) Temperature increases and dynamic viscosity decreases.  
 (B) Temperature remains constant and pressure increases.  
 (C) Temperature decreases and sound speed decreases.  
 (D) Temperature remains constant and density decreases.
34. Which of the following statements is TRUE?  
 (A) Wing dihedral reduces roll stability while a low wing increases roll stability.  
 (B) Wing dihedral increases roll stability while a low wing reduces roll stability.  
 (C) Wing dihedral, as well as low wing reduces roll stability.  
 (D) Wing dihedral, as well as low wing increases roll stability.
35. An aircraft has a level flight stalling speed of 60 m/s EAS (equivalent air speed). As per V-n diagram, what is the minimum speed at which it should be designed to withstand the maximum vertical load factor of 9?  
 (A) 20 m/s  
 (B) 60 m/s  
 (C) 120 m/s  
 (D) 180 m/s

36. Match each mode of aircraft motion listed in Group 1 to its corresponding property from Group 2.

Group 1: Aircraft mode	Group 2: Property
P: Short period mode	1: Coupled roll–yaw oscillations

Q: Wing rock	2: Angle of attack remains constant
R: Phugoid mode	3: Roll oscillations
S: Dutch roll	4: Speed remains

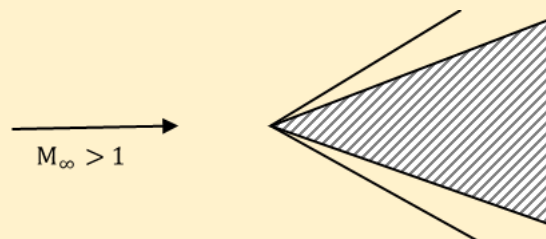
- (A) P-2, Q-1, R-4, S-3
- (B) P-4, Q-3, R-2, S-1
- (C) P-4, Q-1, R-2, S-3
- (D) P-2, Q-3, R-4, S-1

37. An aircraft is cruising at a true air speed (TAS) of 100 m/s under ISA conditions, at an altitude at which the density of free stream is  $0.526 \text{ kg/m}^3$ . What will be the equivalent air speed (EAS)?
- (A) 65.5 m/s
  - (B) 72.5 m/s
  - (C) 110.5 m/s
  - (D) 152.7 m/s
38. In the definition of the aircraft Euler angles  $\phi$  (roll),  $\theta$  (pitch), and  $\Psi$  (yaw), the correct sequence of rotations required to make the inertial frame coincide with the aircraft body frame is
- (A) First  $\Psi$  about z axis, second  $\theta$  about y axis, third  $\phi$  about x axis
  - (B) First  $\theta$  about y axis, second  $\phi$  about x axis, third  $\Psi$  about z axis
  - (C) First  $\phi$  about x axis, second  $\theta$  about y axis, third  $\Psi$  about z axis
  - (D) First  $\Psi$  about z axis, second  $\phi$  about x axis, third  $\theta$  about y axis
39. To maximize range of a jet engine aircraft, it should be flown at a velocity that maximizes
- (A)  $C_L/C_D$
  - (B)  $C_L^{0.5}/C_D$
  - (C)  $C_L^{1.5}/C_D$
  - (D)  $C_L^2/C_D$
40. The primary function of the fin in the vertical tail of an aircraft is to provide
- (A) Yaw control
  - (B) Yaw stability
  - (C) Roll damping
  - (D) Roll stability
41. An aircraft requires the trailing edge of the elevator to be deflected upwards from its initial position to lower the trim speed. Which of the following statements about the static stick-fixed stability of the aircraft is true?
- (A) The aircraft is unstable.
  - (B) The aircraft is neutrally stable.
  - (C) The aircraft is stable.
  - (D) The stability of the aircraft cannot be determined from the given information.
42. Which of the following statements is true for an aircraft flying at a low angle of attack?

- (A) Yawing motion generates yawing moment and pitching moment.  
(B) Rolling motion generates rolling moment and pitching moment.  
(C) Yawing motion generates yawing moment and rolling moment.  
(D) Pitching motion generates yawing moment and rolling moment.
43. Consider a 2-D flow with stream function  $\Psi = \frac{1}{2} \ln(\sqrt{x^2 + y^2})$ . The absolute value of circulation along a unit circle centered at  $(x = 0, y = 0)$  is  
(A) 0  
(B) 1  
(C)  $\pi/2$   
(D)  $\pi$
44. Consider a symmetric airfoil at an angle of attack of 4 degrees. Using thin airfoil theory, the magnitude of the moment coefficient about the leading edge is  
(A)  $2\pi$   
(B)  $\pi$   
(C)  $\pi^2/60$   
(D)  $\pi^2/90$
45. Consider steady, inviscid flow in a convergent-divergent (CD) nozzle, with a normal shock in the divergent portion. The static pressure along the nozzle downstream of the normal shock  
(A) remains constant  
(B) increases isentropically to the static pressure at the nozzle exit.  
(C) decreases isentropically to the static pressure at the nozzle exit.  
(D) can increase or decrease, depending on the magnitude of the static pressure at the nozzle exit.
46. For a free stream Mach number of 0.7 the critical pressure coefficient ( $C_{p,cr}$ ) is -0.78. If the minimum pressure coefficient for a given airfoil in incompressible flow is -0.6, then the flow over the airfoil at a free stream Mach number of 0.7 is  
(A) Subsonic and compressible  
(B) Completely supersonic  
(C) Incompressible  
(D) partly subsonic and partly supersonic
47. If the flow Mach number in a turbulent boundary layer over a flat plate is increased keeping the Reynolds number unchanged, the skin friction coefficient  $C_f$   
(A) Decreases  
(B) Increases  
(C) Remains constant  
(D) Initially decreases, followed by a rapid increase
48. In supersonic wind-tunnel design, an oblique shock diffuser is preferred over a normal shock diffuser because



- (A) It reduces total pressure loss  
(B) The flow is slowed down more rapidly  
(C) The flow is accelerated more rapidly  
(D) It increases total pressure loss
49. The variation of downwash along the span of an untwisted wing of elliptic platform is  
(A) Sinusoidal  
(B) Parabolic  
(C) Elliptic  
(D) constant
50. Flow past an airfoil is to be modelled using a vortex sheet. The strength of the vortex sheet at the trailing edge will be  
(A) 0  
(B) 1  
(C)  $2\pi$   
(D)  $\infty$
51. Consider a 2-D body in supersonic flow with an attached oblique shock as shown below



- An increase in free stream Mach number  $M_\infty$  will cause the oblique shock wave to  
(A) move closer to the body  
(B) move away from the body  
(C) detach from the body  
(D) become a normal shock
52. The geometrical features of a supercritical airfoil are  
(A) rounded leading edge, flat upper surface and high chamber at the rear  
(B) sharp leading edge, curved upper surface and high chamber at the rear  
(C) rounded leading edge, curved upper surface and no chamber at the rear  
(D) sharp leading edge, flat upper surface and no chamber at the rear
53. Which one of the following high lift devices results in higher stalling angle?  
(A) Split flap  
(B) Fowler flap  
(C) Plain flap  
(D) Leading edge flap

54. A turbofan engine has a bypass ratio of 5 and a total mass flow rate of 120 kg/s. the mass flow rate through the bypass duct is
- (A) 20 kg/s
  - (B) 100 kg/s
  - (C) 120 kg/s
  - (D) 600 kg/s
55. A turbojet engine is operating with afterburner off. If the afterburner is switched on, then
- (A) Both thrust and *sfc* decreases
  - (B) Thrust increases and *sfc* decreases
  - (C) Thrust decreases and *sfc* increases
  - (D) Both thrust and *sfc* increase
56. A centrifugal compressor operates with a tip blade speed of 340 m/s. the air leaves the impeller with a radial velocity of 88 m/s. if the slip factor is 0.85, the relative velocity at the blade tip is
- (A) 101.7 m/s
  - (B) 120.3 m/s
  - (C) 132.6 m/s
  - (D) 135.8 m/s
57. An ideal ramjet engine is flying at a Mach number  $M$ . the exhaust gas static temperature at the outlet of the nozzle  $T_e$ . The ambient static temperature is  $T_a$ . Gas constant  $R$  and specific heat ratio  $\gamma$  do not vary through the ramjet. Assuming that nozzle exhaust static pressure is equal to the ambient pressure and fuel air ratio  $f \ll 1$ , the thrust per unit mass flow rate is
- (A)  $\sqrt{\gamma RT_a} \left[ \sqrt{\frac{T_e}{T_a}} \right]$
  - (B)  $\sqrt{\gamma RT_a} \left[ \sqrt{\frac{T_e}{T_a}} - 1 \right]$
  - (C)  $M \sqrt{\gamma RT_a} \left[ \sqrt{\frac{T_e}{T_a}} - 1 \right]$
  - (D)  $M \sqrt{\gamma RT_a} \left[ \sqrt{\frac{T_e}{T_a}} \right]$
58. A 50 percent degree of reaction axial flow turbine operates with a mean blade speed of 180 m/s. the flow leaves the stator and enters the rotor at an angle of 60 degrees to the axial direction. The axial velocity is 150 m/s, and remains constant throughout the stage. The turbine power per unit mass flow is
- (A) 29.76 kJ/kg
  - (B) 41.12 kJ/kg
  - (C) 58.33 kJ/kg
  - (D) 61.13 kJ/kg
59. The chamber stagnation temperature inside a rocket motor is  $T_c$ . only a convergent nozzle is used, and the flow at the exit of the nozzle is choked. Assume that the nozzle exhaust static

pressure is equal to ambient static pressure. Gas constant for exhaust gases is  $R$  and ratio of specific heats is  $\gamma$ . The specific impulse of the rocket motor is

- (A)  $\sqrt{\frac{2\gamma RT_c}{\gamma-1}}$
- (B)  $\sqrt{\frac{\gamma RT_c}{\gamma-1}}$
- (C)  $\sqrt{\frac{\gamma RT_c}{\gamma+1}}$
- (D)  $\sqrt{\frac{2\gamma RT_c}{\gamma+1}}$

60. Air enters the combustor of a gas turbine engine at a total temperature of 500 K and leaves the combustor at total temperature of 1800 K. If  $c_p$  remains constant at 1.005 kJ/kgK and heating value of the fuel used is 44MJ/kg, the fuel to air ratio is

- (A) 0.003
- (B) 0.012
- (C) 0.031
- (D) 0.074

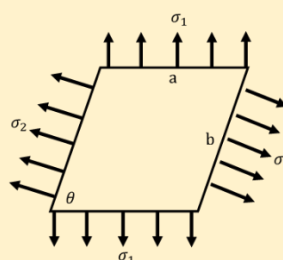
61. The initial temperature sensitivity of burn rate of a solid rocket motor propellant is positive. If the initial temperature increases then

- (A) Thrust increases but burn time decreases
- (B) Thrust decreases and burn time decreases too
- (C) Thrust remains same but burn time increases
- (D) Thrust increases but burn time remains same

62. An aircraft is cruising at a Mach number of 0.8 at an altitude where the ambient static pressure is 95 kPa. The diffuser exit total pressure is 140 kPa. Assuming there is no change in specific heat at constant pressure across the diffuser, and ratio of specific heats is 1.4, the adiabatic efficiency of the intake is

- (A) 0.988
- (B) 0.915
- (C) 0.722
- (D) 0.684

63. A parallelogram shaped plate of dimensions 'a' and 'b' as shown in figure, is subjected to a uniform loading of normal stresses  $\sigma_1$  and  $\sigma_2$ . The plate is in equilibrium for



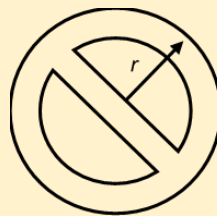
- (A) Any value of  $\sigma_1$  and  $\sigma_2$
- (B)  $\sigma_2 = \sigma_1 \cos \theta$
- (C)  $\sigma_1 = \sigma_2 \cos \theta$
- (D)  $\sigma_2 = \sigma_1$

64. A column of solid circular cross section and length  $L$  can have various end conditions. Choose the correct set that matches the end conditions (listed in Group I) with the corresponding effective length for buckling (listed in Group II).

Group I (end conditions)	Group II (effective length)
P: one end built-in and other end is free	1: $1.0 L$
Q: both ends pinned	2: $0.7 L$
R: both ends built-in	3: $2.0 L$
S: one end built-in and other end pinned	4: $0.5 L$

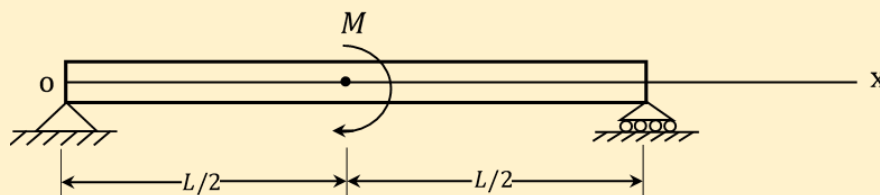
- (A) P-3      (B) P-4      (C) P-2      (D) P-3  
 Q-1      Q-1      Q-1      Q-1  
 R-4      R-2      R-3      R-2  
 S-2      S-3      S-4      S-4

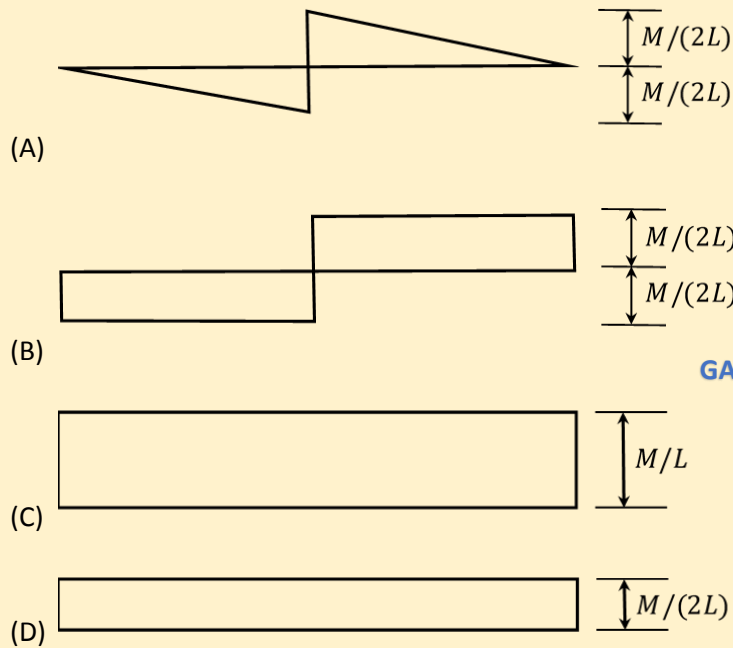
65. A thin-walled tube of circular cross section with a mean radius  $r$  has a central web which divides it into two symmetric cells as shown. A torque  $M$  is acting on the cross section. The shear flow  $q$  in the central web is



- (A)  $q = \frac{M}{2\pi r^2}$
- (B)  $q = 0$
- (C)  $q = \frac{M}{4\pi r^2}$
- (D)  $q = \frac{M}{\pi r^2}$

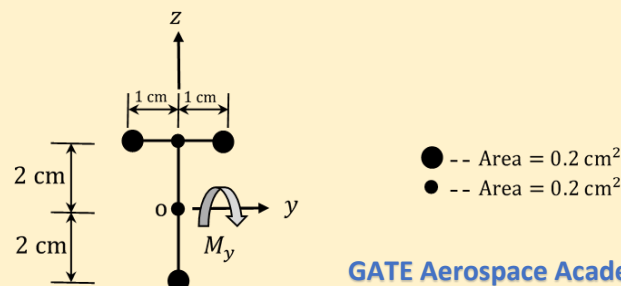
66. A concentrated bending moment  $M$  is acting at mid-span of a beam as shown. The shear force diagram for the beam is:





GATE Aerospace Academy

67. An idealised thin-walled cross-section of a beam and the respective areas of the booms are as shown. A bending moment  $M_y$  is acting on the cross-section. The ratio of the magnitude of normal stress in the top booms to that of the bottom is



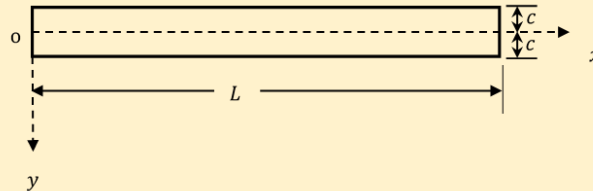
GATE Aerospace Academy

- (A) 5/11  
 (B) 2/5  
 (C) 1  
 (D) 5/2
68. An engineer is asked to test a system which can be idealized as SDOF (single degree of freedom) with viscous damping. A frequency response test was conducted and it is found that quality factor  $Q$  is equal to 10. What will be the logarithmic decrement if a free vibration test is performed?
- (A)  $\pi/40$   
 (B)  $\pi/20$   
 (C)  $\pi/10$   
 (D)  $\pi/5$

69. A beam occupies a region of  $0 \leq x \leq L$ ;  $-c \leq y \leq c$ ;  $-0.5 \leq z \leq 0.5$  as shown below. The beam can be considered to be in plane stress condition in  $x - y$  plane. Airy's stress for the beam is given as:

$$\phi(x, y) = -\frac{Pxy^3}{4c^3} + \frac{3Pxy}{4c}$$

Where  $P$  is a constant.



The above stress function pertains to a

- (A) Simply supported beam carrying a point load  $P$  at mid span  
 (B) Simply supported beam carrying a uniform distributed load of intensity  $P$  per unit length  
 (C) Cantilever beam clamped at end  $x = L$  and carrying a shear load  $P$  at  $x = 0$   
 (D) Cantilever beam clamped at end  $x = 0$  and carrying a shear load  $P$  at  $x = L$
70. The equation of motion of a uniform slender beam of length  $L$  in flexural vibration is given as  $EI \frac{\partial^4 w}{\partial x^4} + \rho A \frac{\partial^2 w}{\partial t^2} = 0$ , where  $EI$  is the flexural rigidity,  $w$  is the lateral displacement and  $\rho A$  is mass per unit length. The beam is simply supported at two ends  $x = 0$  and  $x = L$ . Assuming the mode shape in fundamental mode to be  $\sin\left(\frac{\pi x}{L}\right)$ , the natural frequency in fundamental mode is

- (A)  $0.5 \sqrt{\frac{EI}{\rho AL^4}} \pi^2$   
 (B)  $\sqrt{\frac{EI}{\rho AL^4}} \pi^2$   
 (C)  $2 \sqrt{\frac{EI}{\rho AL^4}} \pi^2$   
 (D)  $4 \sqrt{\frac{EI}{\rho AL^4}} \pi^2$

### Common Data Questions

#### Common Data for Questions 71, 72 and 73:

A two-dimensional state of stress in an isotropic material is given by

$$[\sigma] = c \begin{bmatrix} -8 & 5 \\ 5 & 16 \end{bmatrix} \text{ MPa}$$

Where  $c$  is linearly proportional to the applied loading. The failure stress is  $\sigma_f = 350$  MPa (which is 0.2 % offset yield stress).

71. The principal stresses are  
 (A)  $\sigma_1 = 17c$  MPa,  $\sigma_2 = -9c$  MPa  
 (B)  $\sigma_1 = 9c$  MPa,  $\sigma_2 = 17c$  MPa  
 (C)  $\sigma_1 = -17c$  MPa,  $\sigma_2 = -9c$  MPa

(D)  $\sigma_1 = -17c$  MPa,  $\sigma_2 = 9c$  MPa

72. The maximum shear stress is

- (A)  $\tau_{max} = 7c$  MPa
- (B)  $\tau_{max} = 10c$  MPa
- (C)  $\tau_{max} = 13c$  MPa
- (D)  $\tau_{max} = 15c$  MPa

73. The maximum value of  $c$  for safe loading of the structure, based on von-Mises failure criterion is

- (A) 10.2
- (B) 15.3
- (C) 25.4
- (D) 31.8

**Common Data for Questions 74 and 75:** A liquid rocket engine with oxidizer to fuel ratio of 5:1 produces a thrust of 1 MN. The initial mass of the rocket is 100,000 kg and its mass at burn out is 10,000 kg. The characteristic velocity  $C^*$  and the thrust coefficient  $C_F$  for the engine are 2386 m/s and 1.4 respectively.

74. The mass flow rate of fuel is

- (A) 300.3 kg/s
- (B) 269.5 kg/s
- (C) 87.4 kg/s
- (D) 49.9 kg/s

75. Neglecting gravity and drag effects, if the initial velocity of the liquid rocket engine is 2.5 km/s, the velocity of the rocket at burnout is

- (A) 1.2 km/s
- (B) 2.5 km/s
- (C) 10.2 km/s
- (D) 11.8 km/s

**Linked Answer Questions: 76 to 85 carry two marks each.**

**Statement for Linked Answer Questions 76 and 77:**

The following two questions relate to Simpson's rule for approximating the integral  $\int_a^b f(x)dx$  on the interval  $[a, b]$ .

76. Which of the following gives the correct formula for Simpson's rule?

- (A)  $\frac{(b-a)}{2} \left[ f(b) + f\left(\frac{a+b}{2}\right) \right]$
- (B)  $\frac{(b-a)}{2} \left[ \frac{f(a)+f(b)}{2} + f\left(\frac{a+b}{2}\right) \right]$
- (C)  $\frac{(b-a)}{2} \left[ \frac{f(a)+f(b)}{3} + \frac{4}{3} f\left(\frac{a+b}{2}\right) \right]$

(D)  $\frac{(b-a)}{2} \left[ \frac{f(a)+f(b)}{3} + \frac{4}{3} f\left(\frac{a+b}{3}\right) \right]$

77. The percentage error (with respect to the exact solution) in estimation of the integral  $\int_0^1 x^3 dx$  using Simpson's rule is
- (A) 5.3
  - (B) 3.5
  - (C) 2.8
  - (D) 0

**Statement for Linked Answer Questions 78 and 79:**

An aircraft has a zero-lift drag coefficient  $C_{D_0} = 0.0223$ , wing aspect ratio  $AR_w = 10.0$ , and Oswald's efficiency factor  $e = 0.7$

78. The thrust required for steady level flight will be minimum when the aircraft operates at a lift coefficient of
- (A) 0.65
  - (B) 0.70
  - (C) 0.75
  - (D) 0.80
79. The glide angle that results in maximum range in a power-off glide is
- (A) 1.82 degrees
  - (B) 2.68 degrees
  - (C) 3.64 degrees
  - (D) 5.01 degrees

**Statement for Linked Answer Questions 80 and 81:**

Consider an untwisted wing of elliptical planform in inviscid incompressible irrotational flow at an angle of attack of 4 degrees. The wing aspect ratio is 7 and the zero-lift angle of attack is -2 degrees.

80. The wing lift coefficient  $C_L$  is
- (A) 0.66
  - (B) 0.51
  - (C) 0.44
  - (D) 0.34
81. The induced drag coefficient of the wing  $C_{Di}$  is
- (A) 0.0053
  - (B) 0.0087
  - (C) 0.0118
  - (D) 0.0197



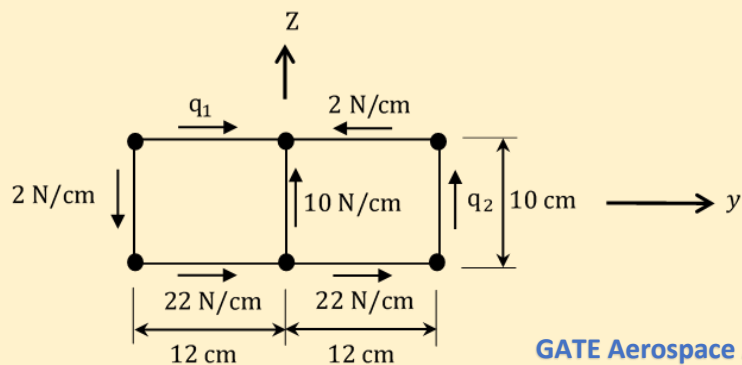
**Statement for Linked Answer Questions 82 and 83:**

A multi-stage axial flow compressor operating at an adiabatic efficiency of 0.9 develops a total pressure ratio of 11. The total temperature at inlet to the compressor is 335 K and stagnation enthalpy rise across each stage is 37 kJ/kg. Ratio of specific heats is 1.4 and specific heat at constant pressure is 1.005 kJ/kg K.

- 82.** The total temperature rise across the compressor is  
 (A) 310.1 K  
 (B) 366.3 K  
 (C) 392.1 K  
 (D) 405.4 K
- 83.** The total number of stages required are  
 (A) 9  
 (B) 10  
 (C) 11  
 (D) 12

**Statement for Linked Answer Questions 84 and 85:**

An idealized thin walled two cell symmetric box beam is as shown. The shear flows in the walls are due to the applied shear forces  $V_y = 480\text{ N}$ ,  $V_z = 300\text{ N}$ , and a torque  $M$ , all acting at the shear center.



GATE Aerospace Academy

- 84.** The shear flows  $q_1$  and  $q_2$  are  
 (A)  $q_1 = -2\text{ N/cm}$      (B)  $q_1 = +2\text{ N/cm}$      (C)  $q_1 = +2\text{ N/cm}$      (D)  $q_1 = -2\text{ N/cm}$   
           $q_2 = +22\text{ N/cm}$       $q_2 = +22\text{ N/cm}$       $q_2 = -22\text{ N/cm}$       $q_2 = -22\text{ N/cm}$
- 85.** The torque  $M$  is  
 (A) 3360 N.cm  
 (B) 5760 N.cm  
 (C) 6960 N.cm  
 (D) 8160 N.cm

**END OF THE QUESTION PAPER**

Download our App

Download application for free Test, Assignments, enquiries and other benefits.

For Android, type **Gate Aerospace Academy** in google play store and get it.

<https://play.google.com/store/apps/details?id=co.lynde.izlcw>

For iOS contact personally

**(9000373757,8368433511)**



Download our App

Download application for free Test, Assignments, enquiries and other benefits.

For Android, type **Gate Aerospace Academy** in google play store and get it.

<https://play.google.com/store/apps/details?id=co.lynde.izlcw>

For iOS contact personally

**(9000373757,8368433511)**





Gate Aerospace 2022 Toppers

★★★★★

Hritam Nath

Amit Vashistha



All India Rank **(2)**

All India Rank **(6)**

25 AIR Krishna	36 AIR Manasa	42 AIR David	62 AIR Vishal	66 AIR Sahil	81 AIR Prutvi Raj	98 AIR Akhilesh	98 AIR Avishi	98 AIR Chouse	109 AIR Surya
118 AIR K somesh	134 AIR Sri Sai	140 AIR Spandan	148 AIR Bala V	162 AIR Bhagya Lakshmi	173 AIR Riya	189 AIR Ravi	226 AIR Megha	258 AIR Dhruv	328 AIR Dinesh
339 AIR Veesh	390 AIR Ritu Raj	404 AIR Pradeep	486 AIR Girish	626 AIR Mandeep					

HEARTY CONGRATULATIONS TO OUR STUDENTS FOR THEIR EXCEPTIONAL PERFORMANCE IN  
**GATE AEROSPACE 2021**

05 AIR Raghunathan	10 AIR Vikrant	13 AIR Priywart	17 AIR Eshwar	23 AIR Sana	27 AIR Karthik	33 AIR Ratnaashree	37 AIR Thositha
39 AIR Mukesh	39 AIR Riya	39 AIR Shiva	47 AIR Shashank	47 AIR Surya	53 AIR Nandini	59 AIR Mayank	64 AIR K.Madhulaasa
89 AIR Vishnu	89 AIR Samridh	98 AIR Anubhav	118 AIR Pratyush	129 AIR Ranjith	134 AIR Shivam	152 AIR Vineeth	173 AIR Satvika



HEARTY CONGRATULATIONS TO OUR STUDENTS FOR THEIR EXCEPTIONAL PERFORMANCE IN  
**GATE AEROSPACE 2020**

03 AIR MAHENDRA GEHLOT Gate Aerospace Academy	04 AIR SHYAM KUMAR Gate Aerospace Academy	10 AIR HARSHIL GOHEL Gate Aerospace Academy	31 AIR AISHWARYA Gate Aerospace Academy
34 AIR VIKAS Gate Aerospace Academy	40 AIR AKSHAY Gate Aerospace Academy	49 AIR SREE LEKSHMI Gate Aerospace Academy	51 AIR PANKAJ Gate Aerospace Academy
62 AIR RAGHVENDRA Gate Aerospace Academy	74 AIR KARTIK Gate Aerospace Academy	and many more...	

Best GATE Aerospace classroom coaching, 230+ Test series, doubt support, application download

[www.gateaerospaceacademy.com](http://www.gateaerospaceacademy.com)

Call: 9000373757, 8368433511

02 AIR	31 AIR	36 AIR	51 AIR	75 AIR	81 AIR
95 AIR	100 AIR	128 AIR	138 AIR	151 AIR	155 AIR
168 AIR	175 AIR	198 AIR	230 AIR	242 AIR	
		245 AIR	247 AIR	260 AIR	

**Gate AeroSpace 2019 Results**

**GATE AEROSPACE ACADEMY**  
Dedicated to Excellence

**GATE AEROSPACE ACADEMY**  
Dedicated to Excellence

Hearty congratulations to our Classroom Program student from **Karunya Institute of Technology and Sciences** for his extraordinary performance in **Gate Aerospace 2021**

**AIR-13**  
**PRIYWART KHATRI**

[www.gateaerospaceacademy.com](http://www.gateaerospaceacademy.com)

**GATE AEROSPACE ACADEMY**  
Dedicated to Excellence

Hearty congratulations to our Classroom Program students from **Rajasthan Technical University Kota** for their extraordinary performance in **Gate Aerospace 2021**

**AIR-10**   **AIR-39**   **AIR-59**   **AIR-98**  
VIKRANT VASHISTHA   MUKESH GOKLANI   MAYANK AGARWAL   ANUBHAV JOSHI

[www.gateaerospaceacademy.com](http://www.gateaerospaceacademy.com)

**GATE AEROSPACE ACADEMY**  
Dedicated to Excellence

Hearty congratulations to our Classroom Program students for their extraordinary performance in **Gate Aerospace 2021**

**AIR-47**   **AIR-39**   **AIR-47**  
M.SURYA REVA UNIVERSITY BANGALORE   RIYA PATEL APOLLO INSTITUTE OF ENGINEERING   SHASHANK KUMAR AMITY UNIVERSITY NOIDA

[www.gateaerospaceacademy.com](http://www.gateaerospaceacademy.com)

**GATE AEROSPACE ACADEMY**  
Dedicated to Excellence

Hearty congratulations to our Classroom Program students from **Institute of Aeronautical Engineering college** for their extraordinary performance in **Gate Aerospace 2021**

**AIR-39**   **AIR-64**   **AIR-152**  
M.SHIVA TEJA REDDY   K.MADHULAALASA   P.VINEETH

[www.gateaerospaceacademy.com](http://www.gateaerospaceacademy.com)

**GATE AEROSPACE ACADEMY**  
Dedicated to Excellence

Hearty congratulations to our Classroom Program students for their extraordinary performance in **Gate Aerospace 2021**

**AIR-53**   **AIR-89**   **AIR-89**  
NANDINI JAIN SRM INSTITUTE OF SCIENCE AND TECHNOLOGY, CHENNAI   M.VISHNU TEJA MANIPAL INSTITUTE OF TECHNOLOGY, MANIPAL   SAMRIDH PATIAL UNIVERSITY OF PETROLEUM AND ENERGY STUDIES, DEHRADUN

[www.gateaerospaceacademy.com](http://www.gateaerospaceacademy.com)

**GATE AEROSPACE ACADEMY**  
Dedicated to Excellence

HEARTY CONGRATULATIONS TO OUR STUDENT **K SWARNASHEE** FOR SELECTING AS A JUNIOR RESEARCH FELLOWSHIP AT DRDO

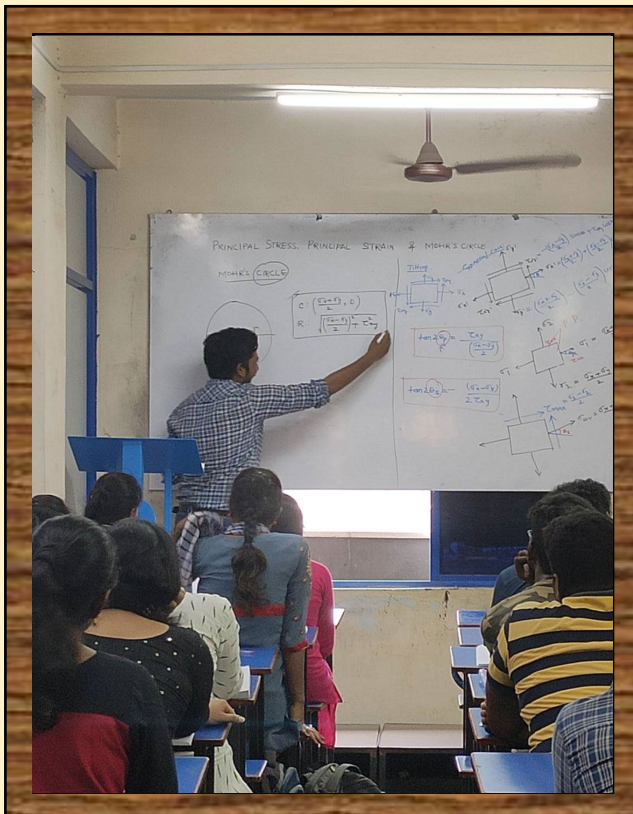
**K.Swarnashree**

[www.gateaerospaceacademy.com](http://www.gateaerospaceacademy.com)

Our gallery

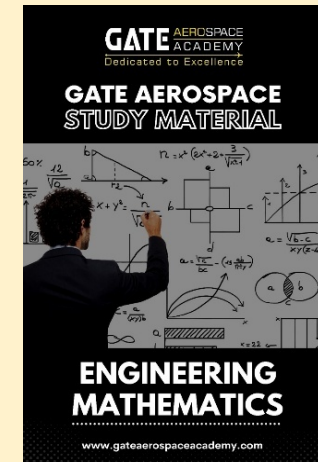








**Our Books**



Best GATE Aerospace classroom coaching, 230+ Test series, doubt support, application download

[www.gateaerospaceacademy.com](http://www.gateaerospaceacademy.com)

Call: 9000373757, 8368433511